



CERAMIC GLAZED FLOOR TILES

600 x 600mm



Company Profile

ABROAD VITRIFIED is a leading manufacturer and exporter of high quality nano polished vitrified tiles. With a wide range of vitrified tiles, designed and produced in state of the art manufacturing unit at Morbi, India, the company is a force to reckon with.

It has been in business of supply of tiles of global quality, and have been successful in India as well as abroad. With a strong management vision and excellent execution, their brand is one of the most respected in the industry all across the globe.

www.abroadvitrified.com



**PUNCH
SERIES**

APPLICATIONS



WHITE BODY
600MMx600MM
PORCELAIN TILES



12001



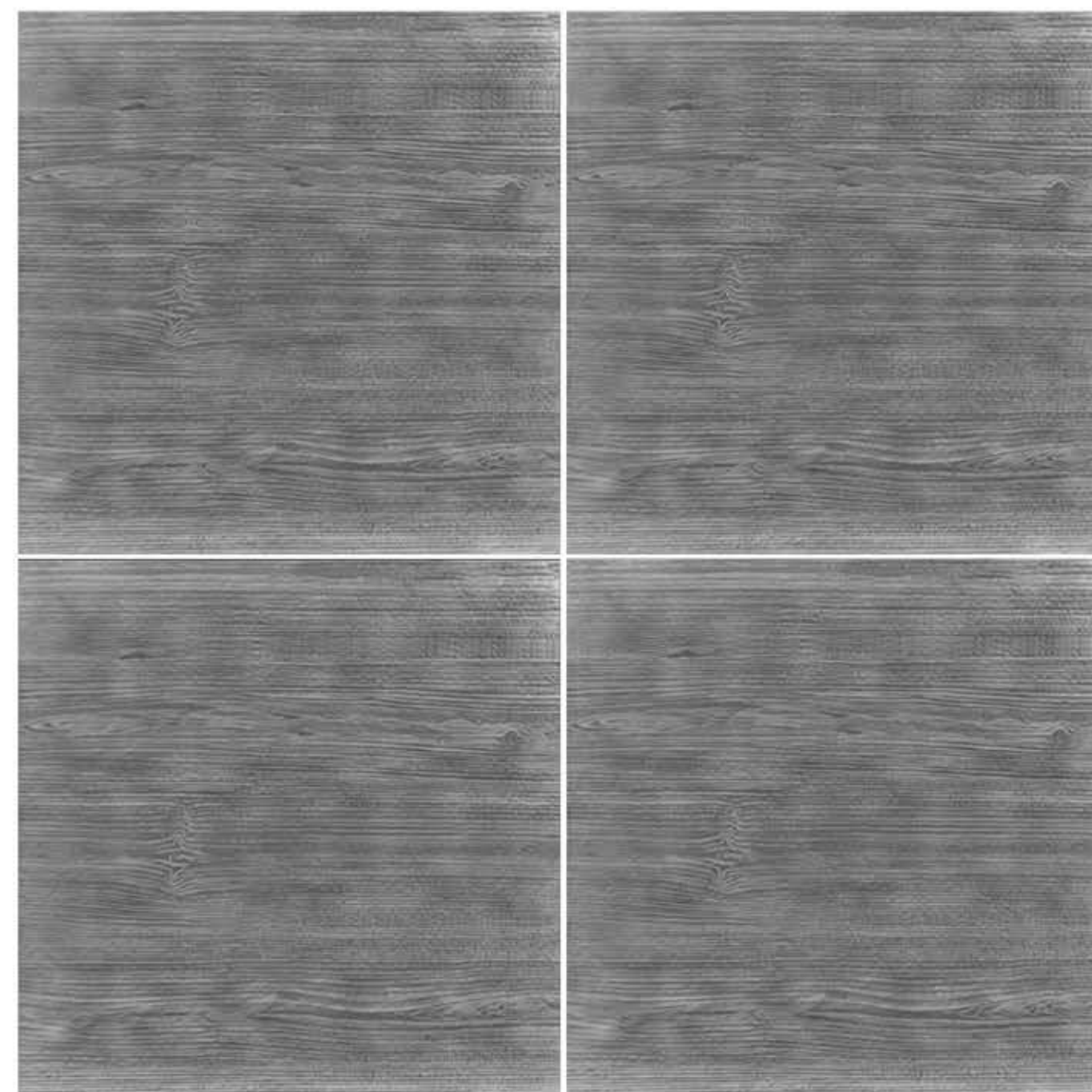
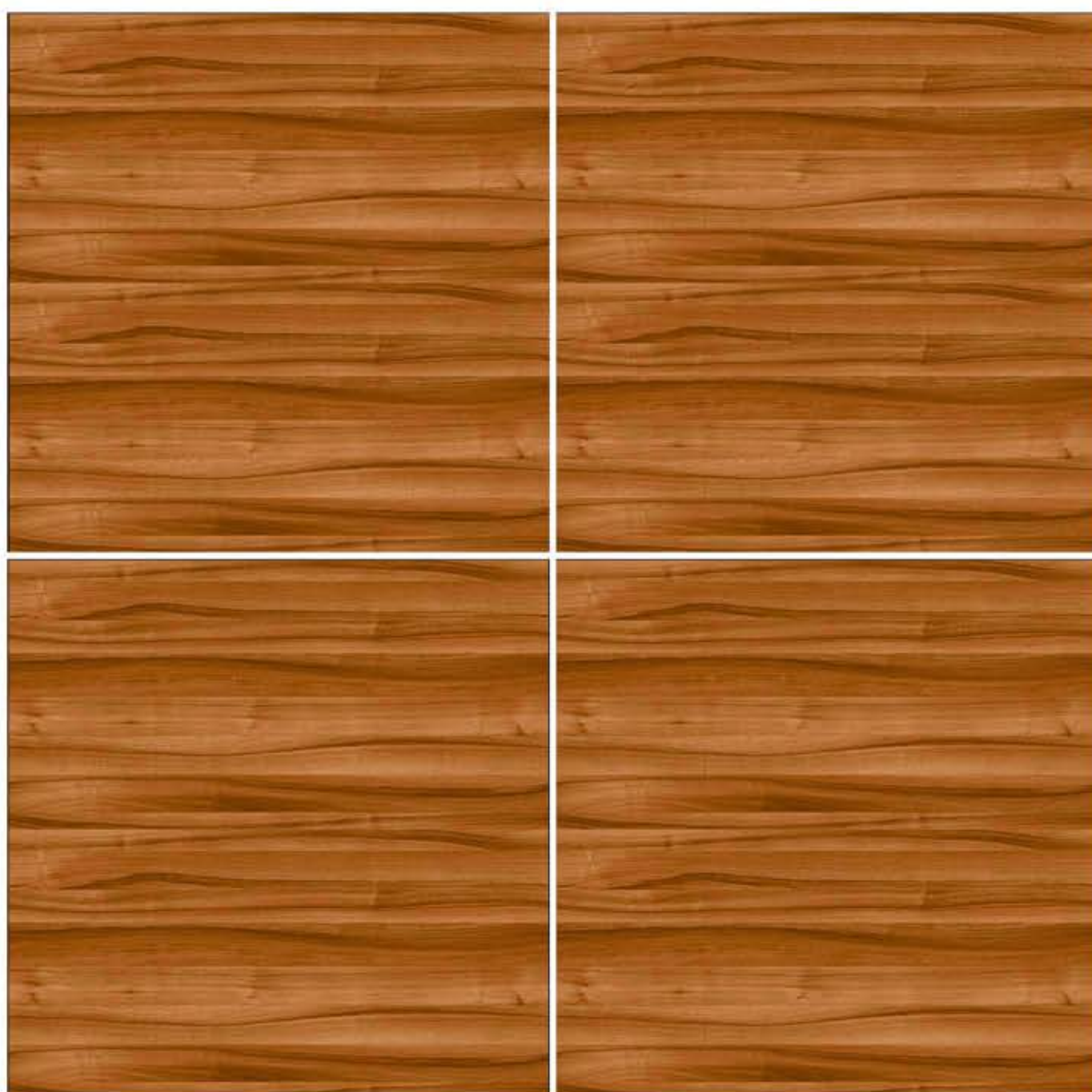
12002



12003



12004





**PUNCH
SERIES**

APPLICATIONS



WHITE BODY
600MMx600MM
PORCELAIN TILES



12005



12006



12007



12008



12009



12010



12011



12012





PUNCH
SERIES

APPLICATIONS



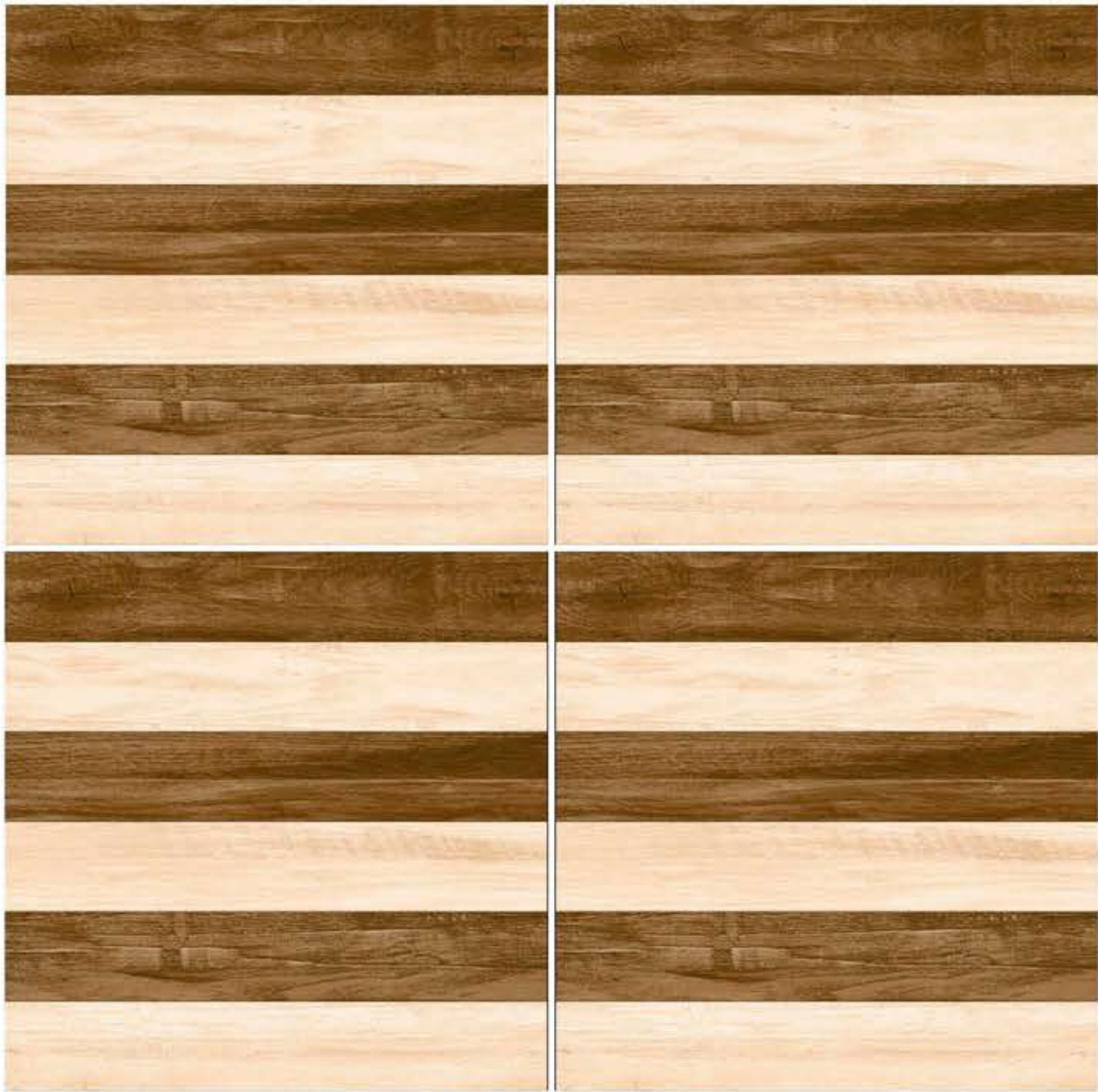
WHITE BODY
600MMx600MM
PORCELAIN TILES



12013



12063





**PUNCH
SERIES**

APPLICATIONS



WHITE BODY

**600MMx600MM
PORCELAIN TILES**



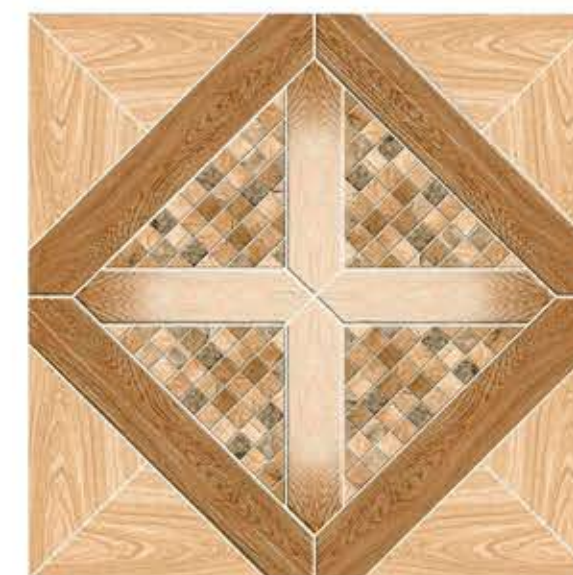
12014



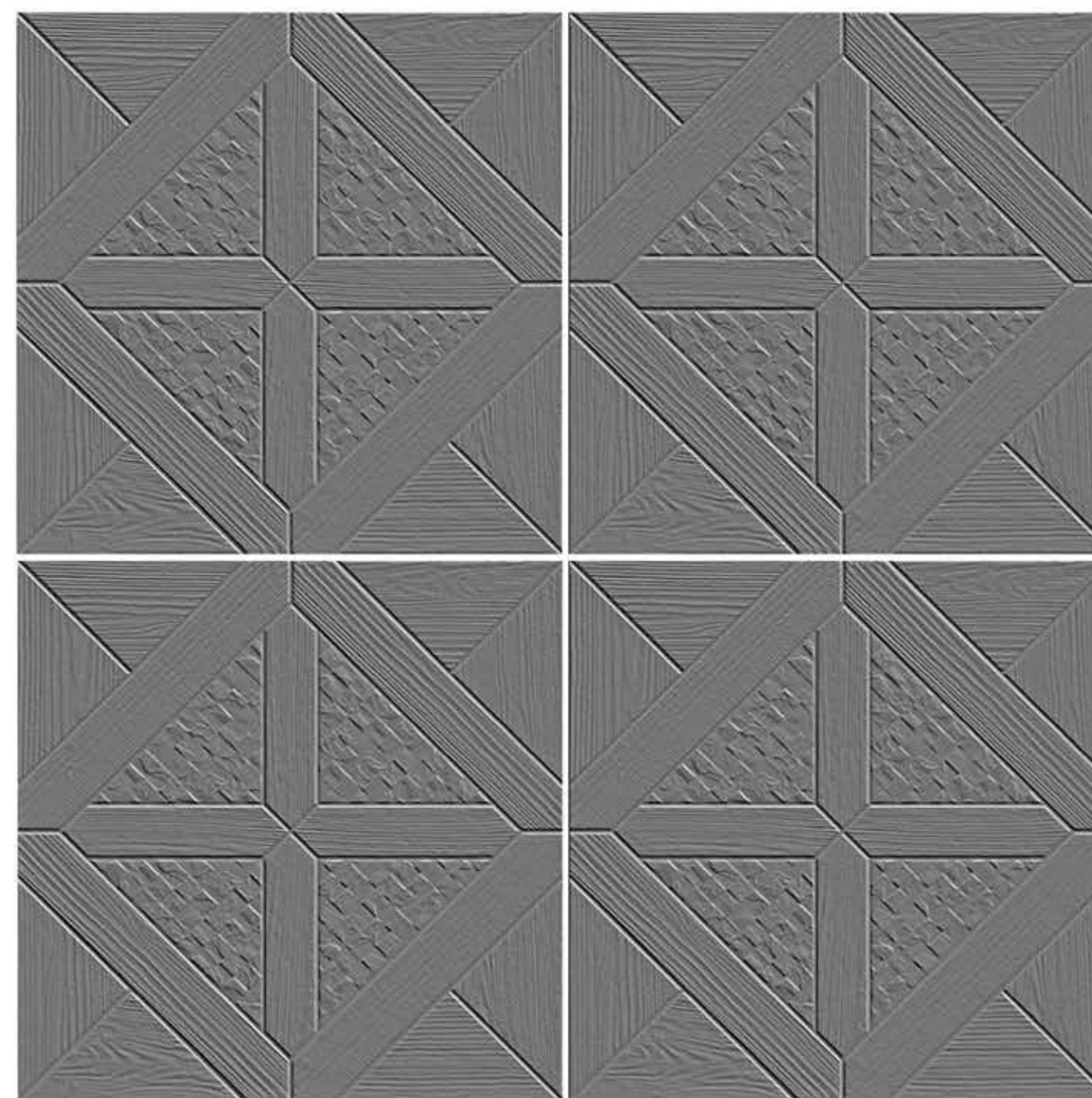
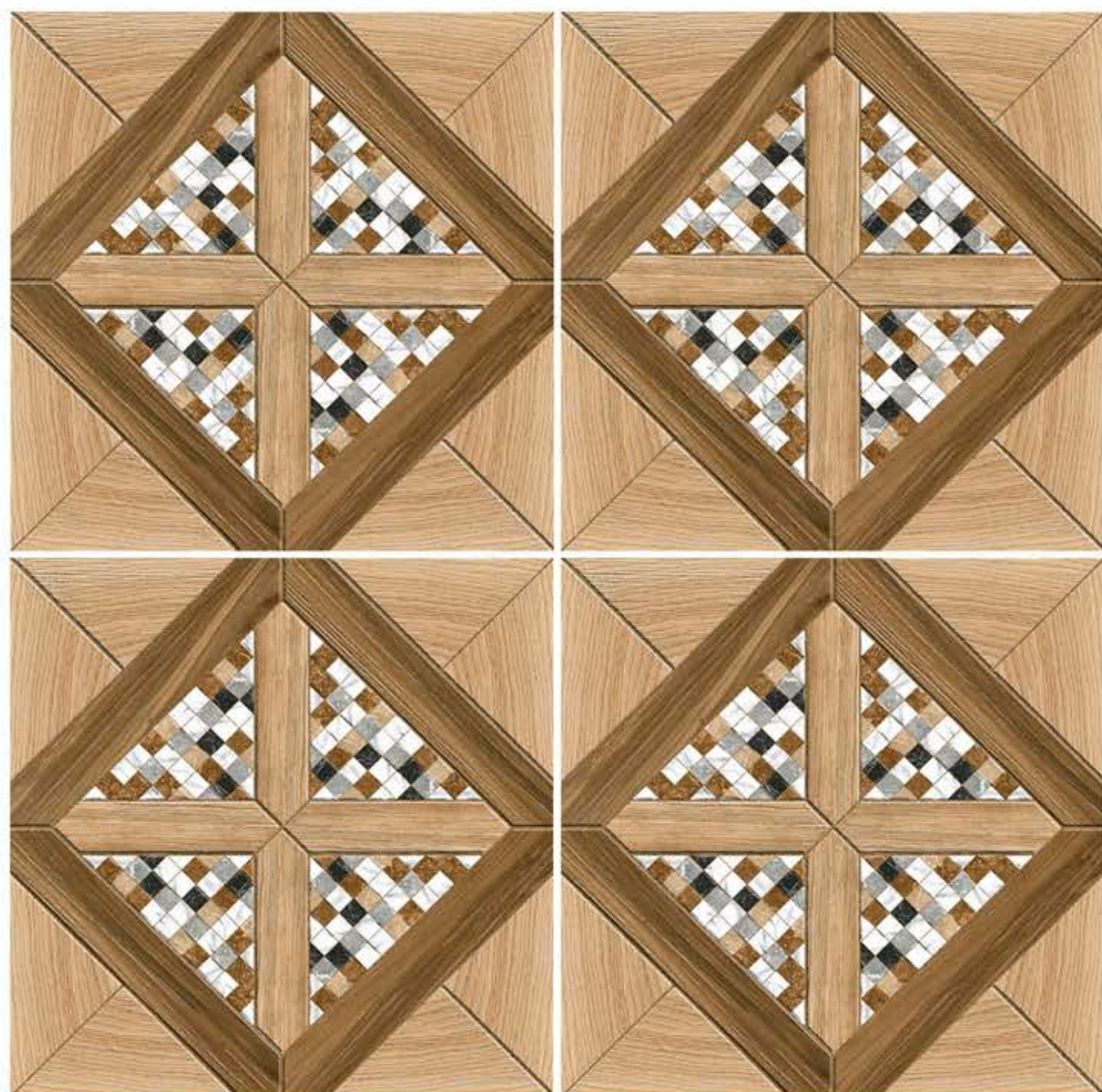
12015



12016



12017





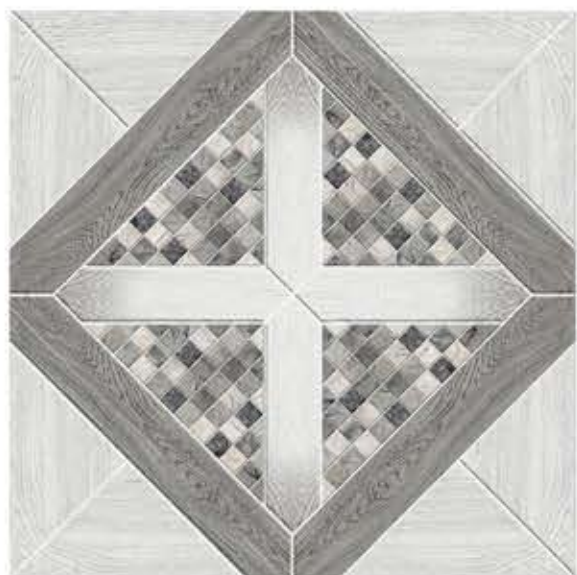
**PUNCH
SERIES**

APPLICATIONS



WHITE BODY

**600MMx600MM
PORCELAIN TILES**



12018



12019



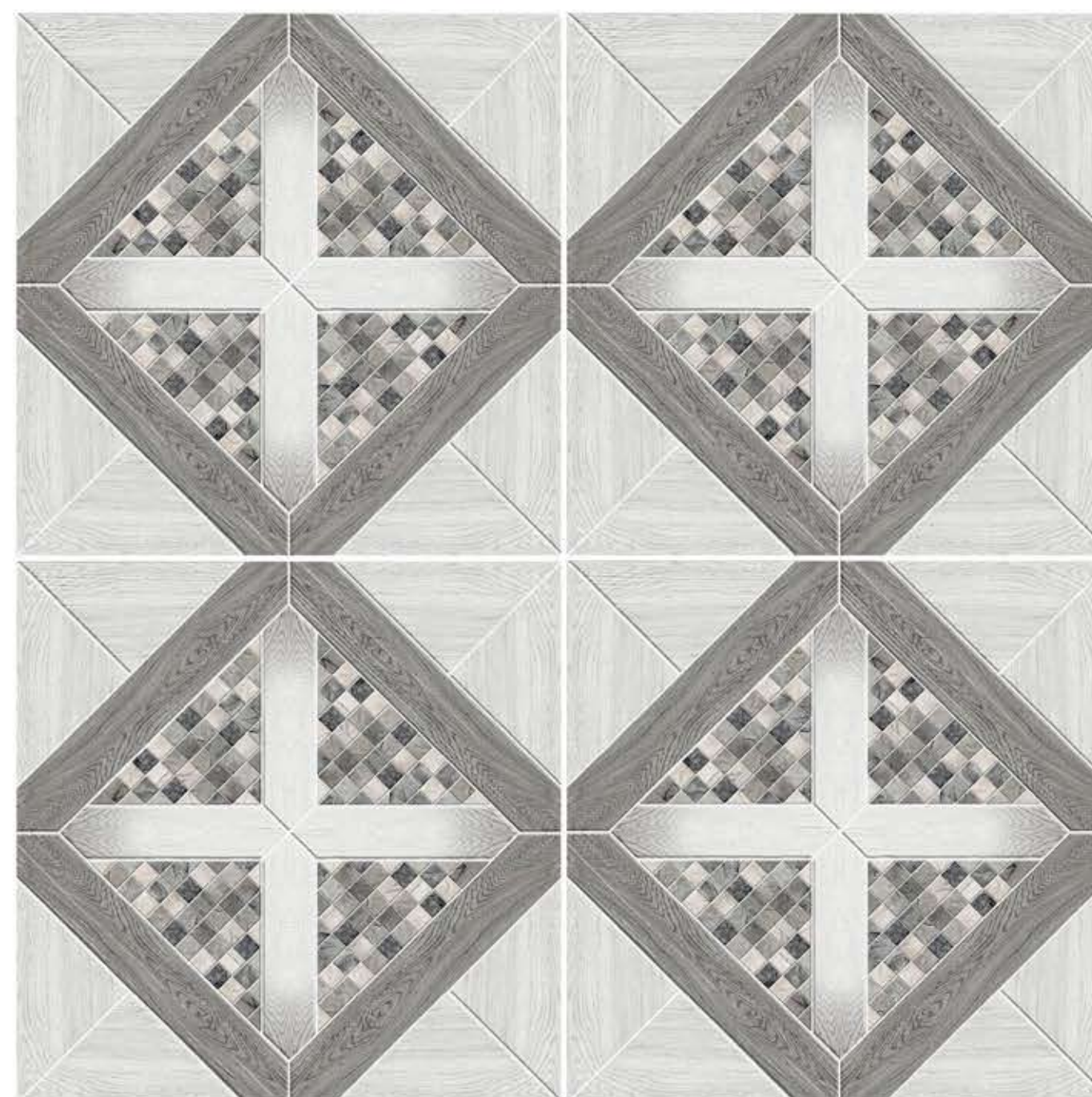
12020



12021



12022





PUNCH
SERIES

APPLICATIONS



WHITE BODY
600MMx600MM
PORCELAIN TILES



12023



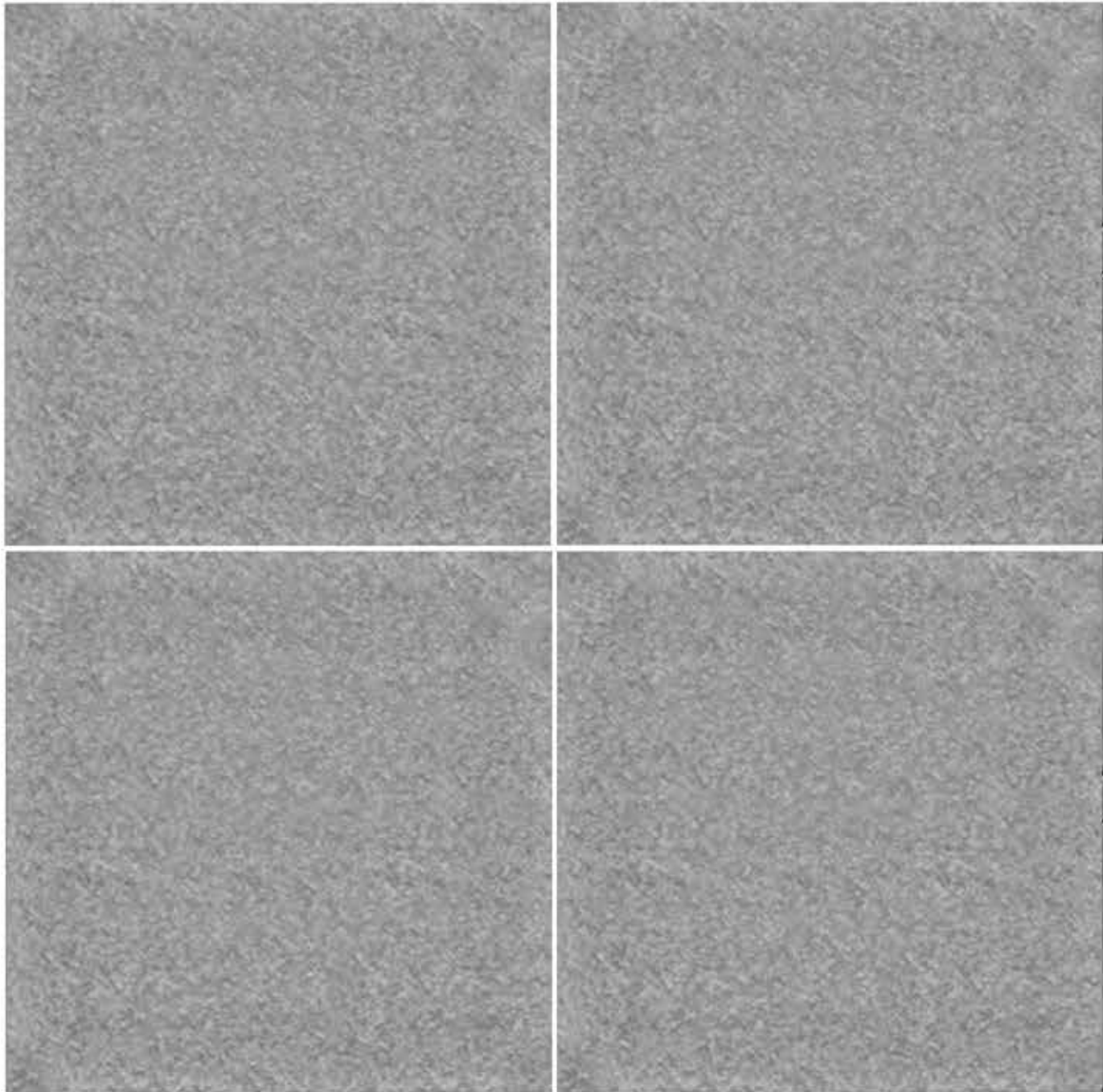
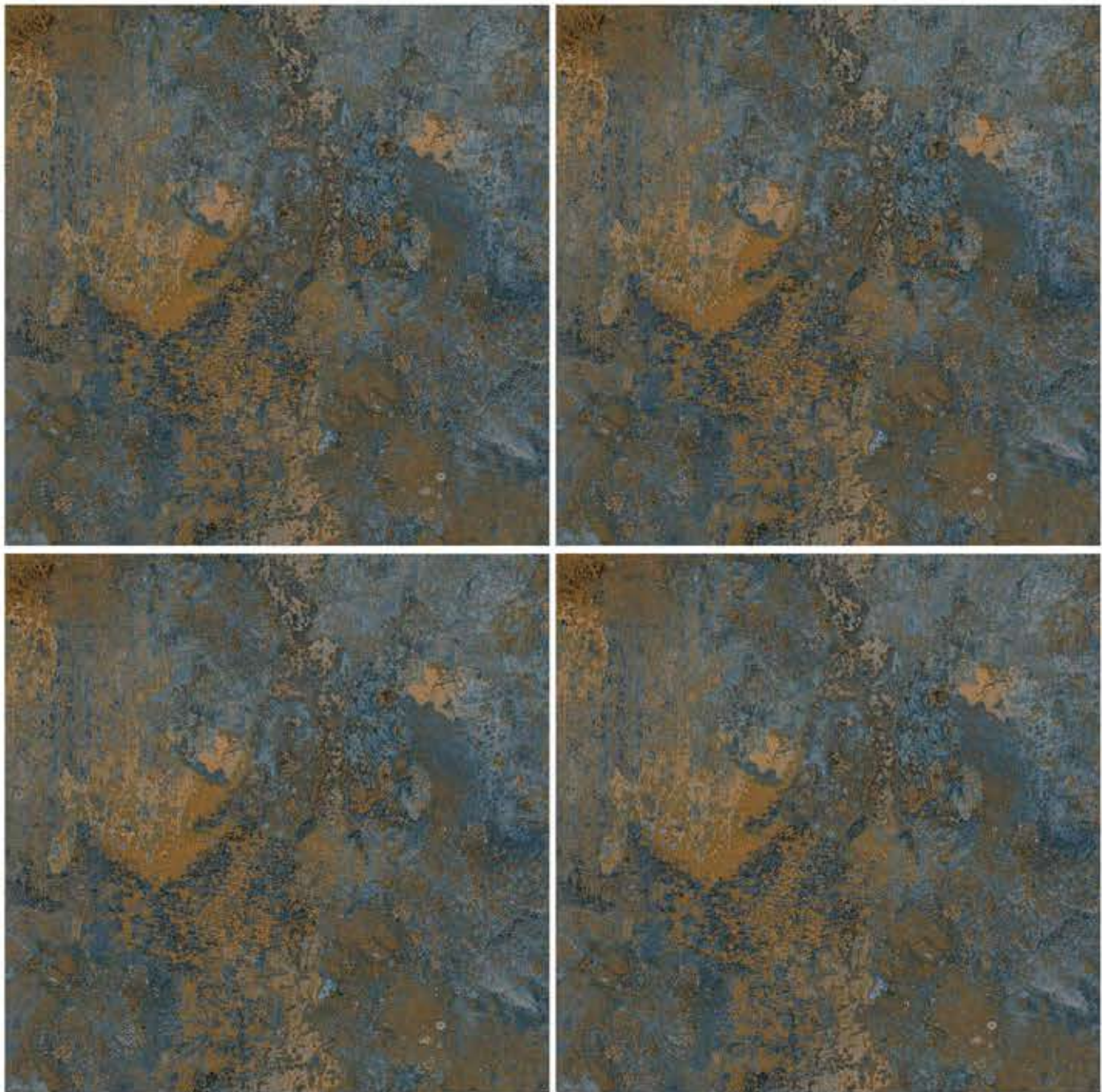
12024



12025



12026





**PUNCH
SERIES**

APPLICATIONS



WHITE BODY
600MMx600MM
PORCELAIN TILES



12027



12028



12029



12030



12031



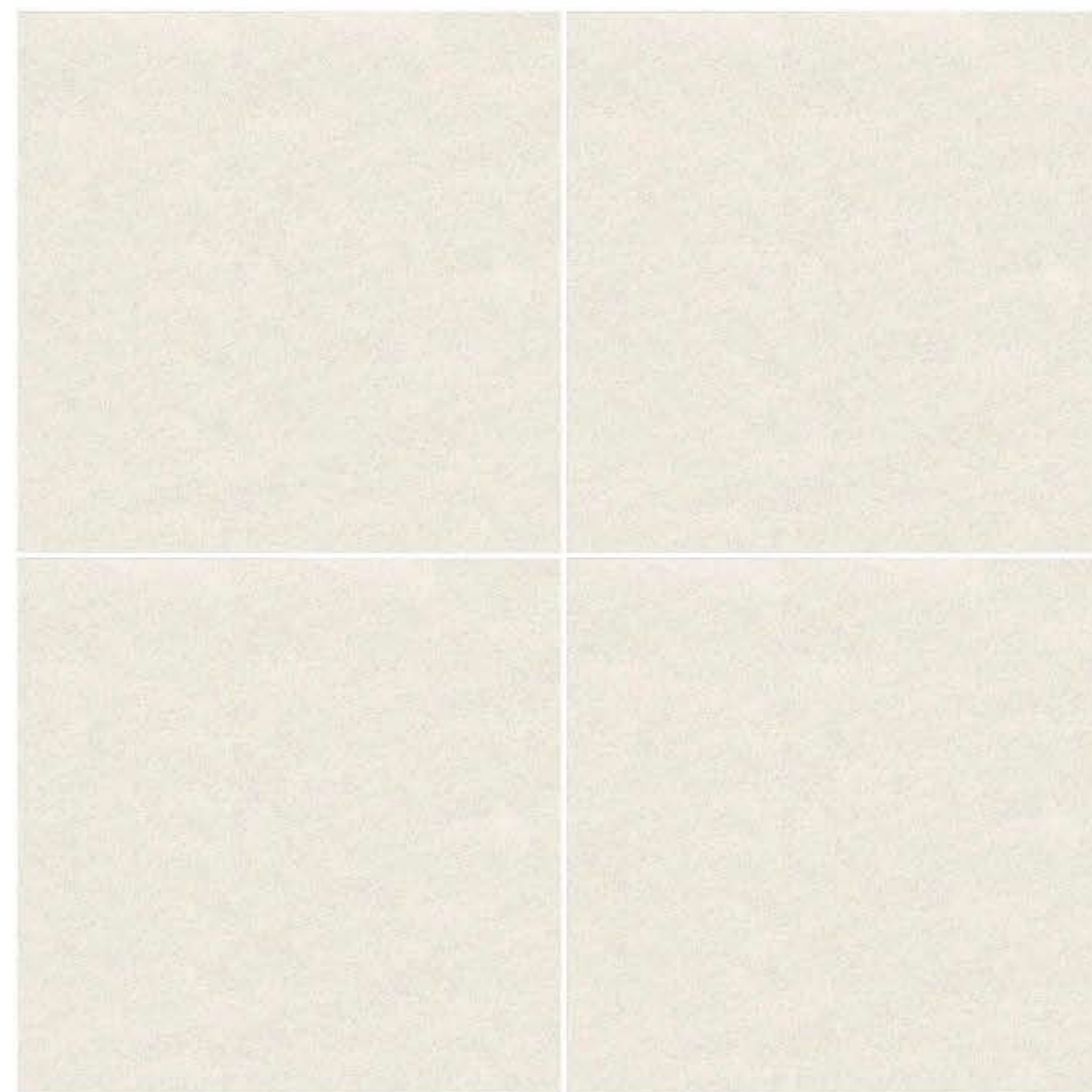
12032



12033



12034





PUNCH
SERIES

APPLICATIONS



WHITE BODY

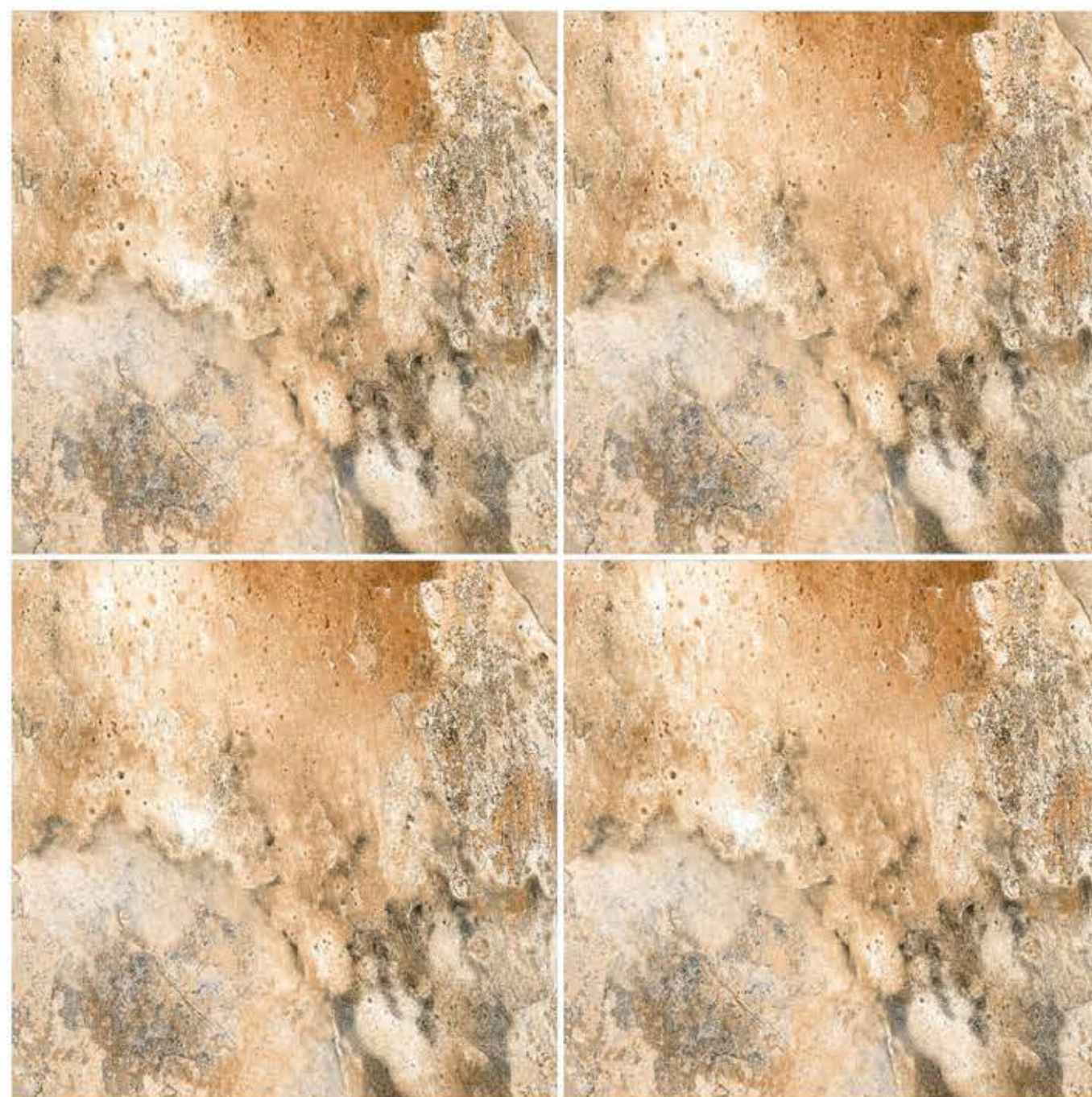
600MMx600MM
PORCELAIN TILES



12035



12036





**PUNCH
SERIES**

APPLICATIONS



WHITE BODY

**600MMx600MM
PORCELAIN TILES**



12037



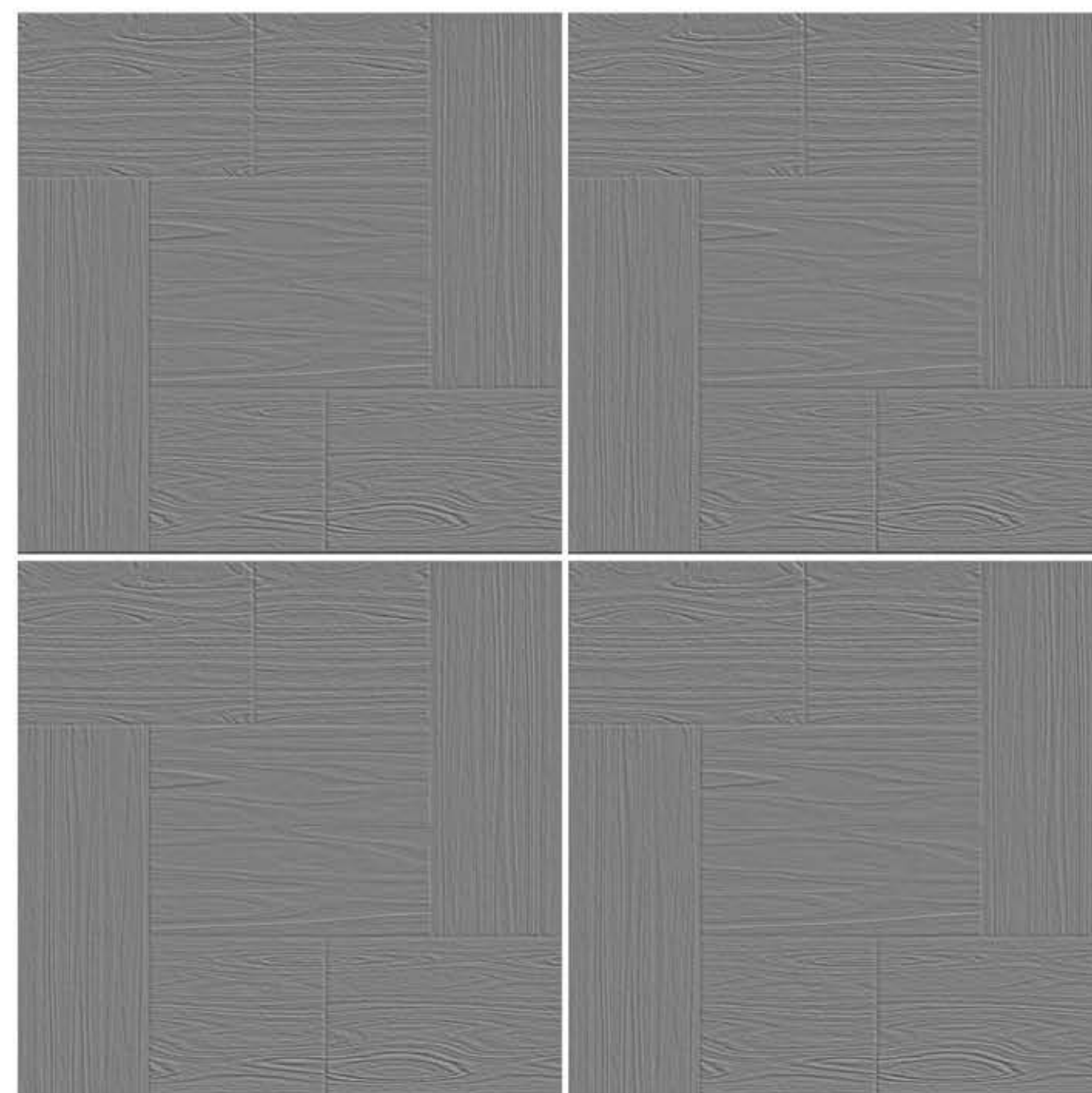
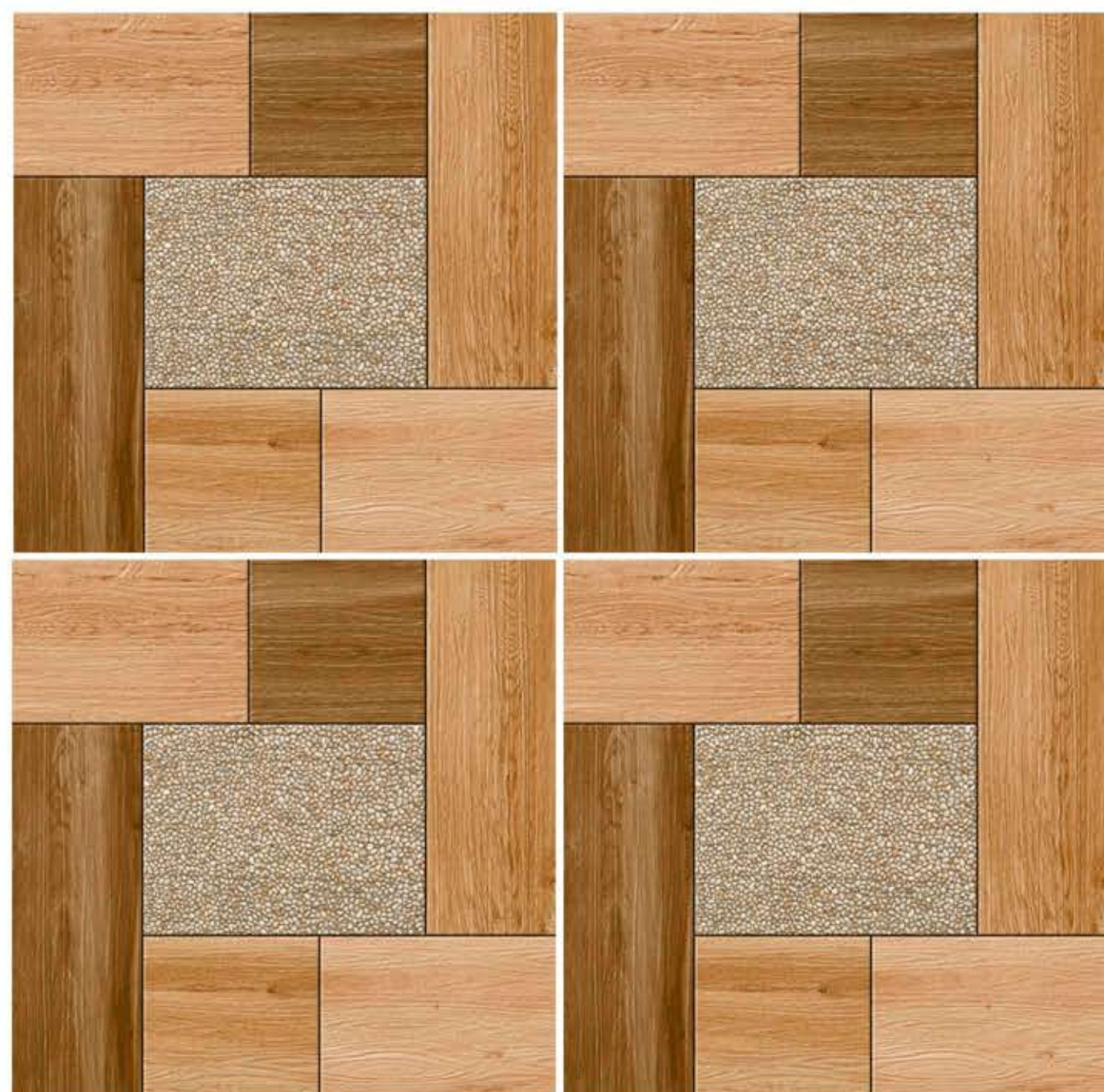
12038



12039



12040





PUNCH
SERIES

APPLICATIONS



WHITE BODY

600MMx600MM
PORCELAIN TILES



12041





**PUNCH
SERIES**

APPLICATIONS



WHITE BODY

**600MMx600MM
PORCELAIN TILES**



12042



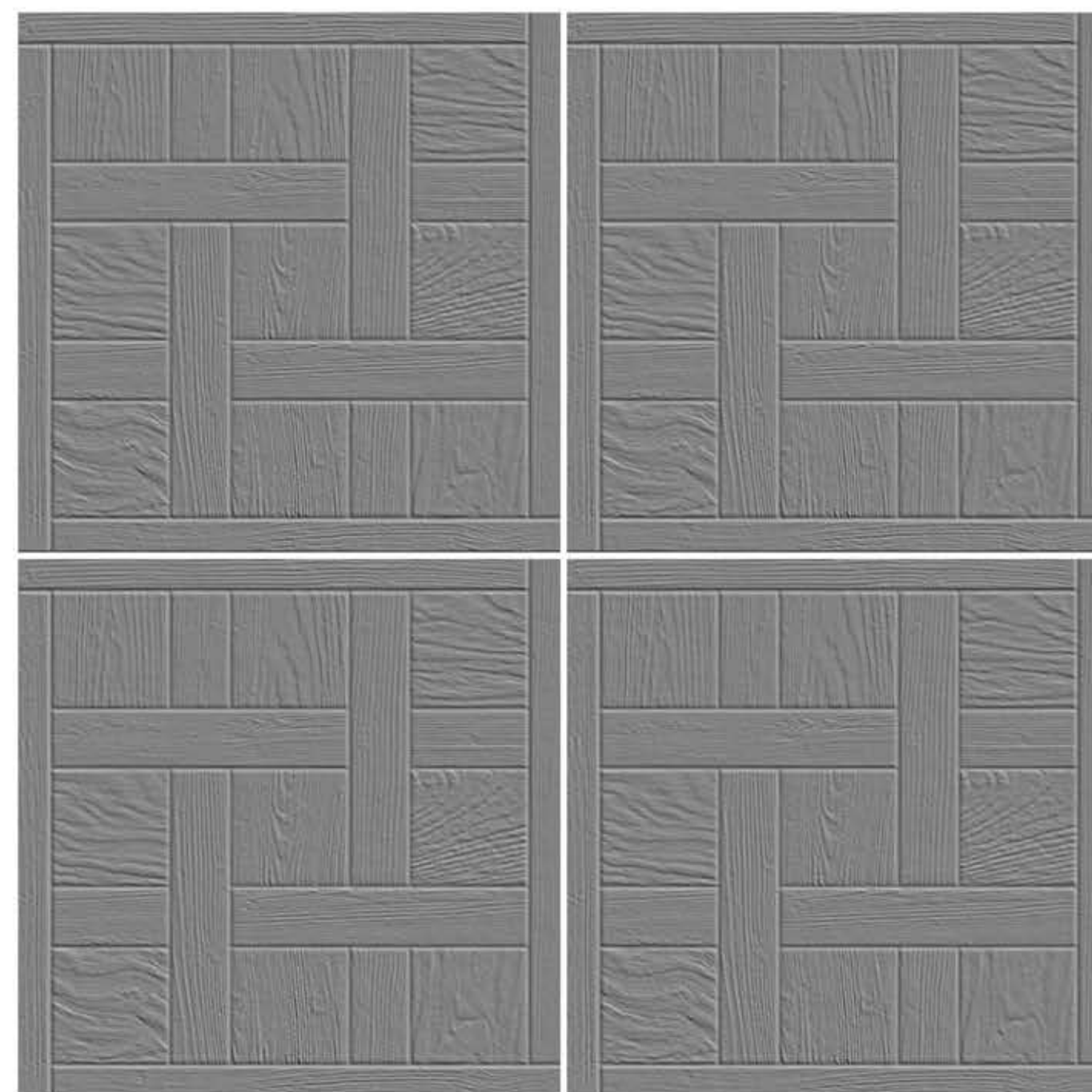
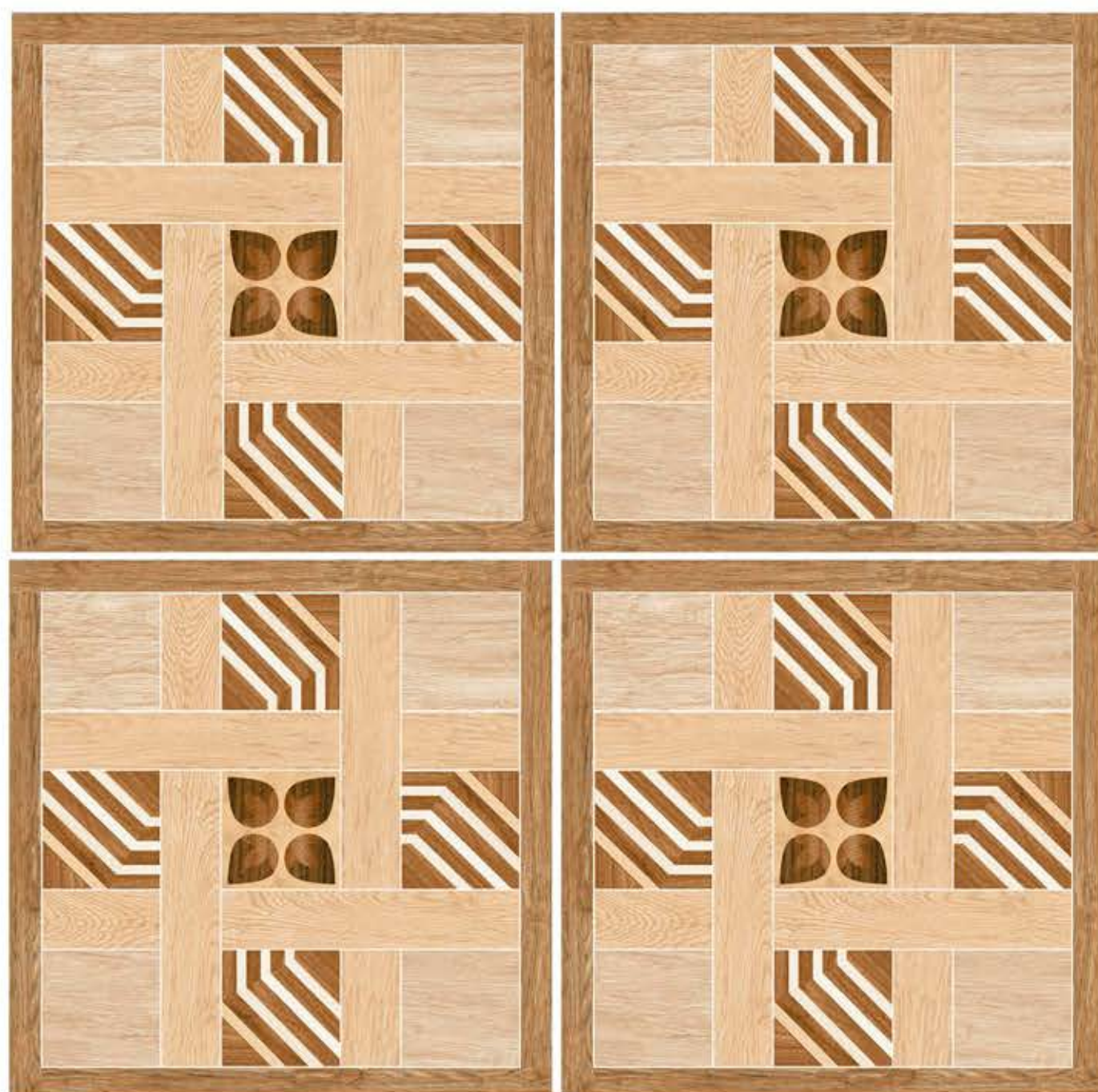
12043



12044



12045





**PUNCH
SERIES**

APPLICATIONS



WHITE BODY
600MMx600MM
PORCELAIN TILES



12046



12047



12048



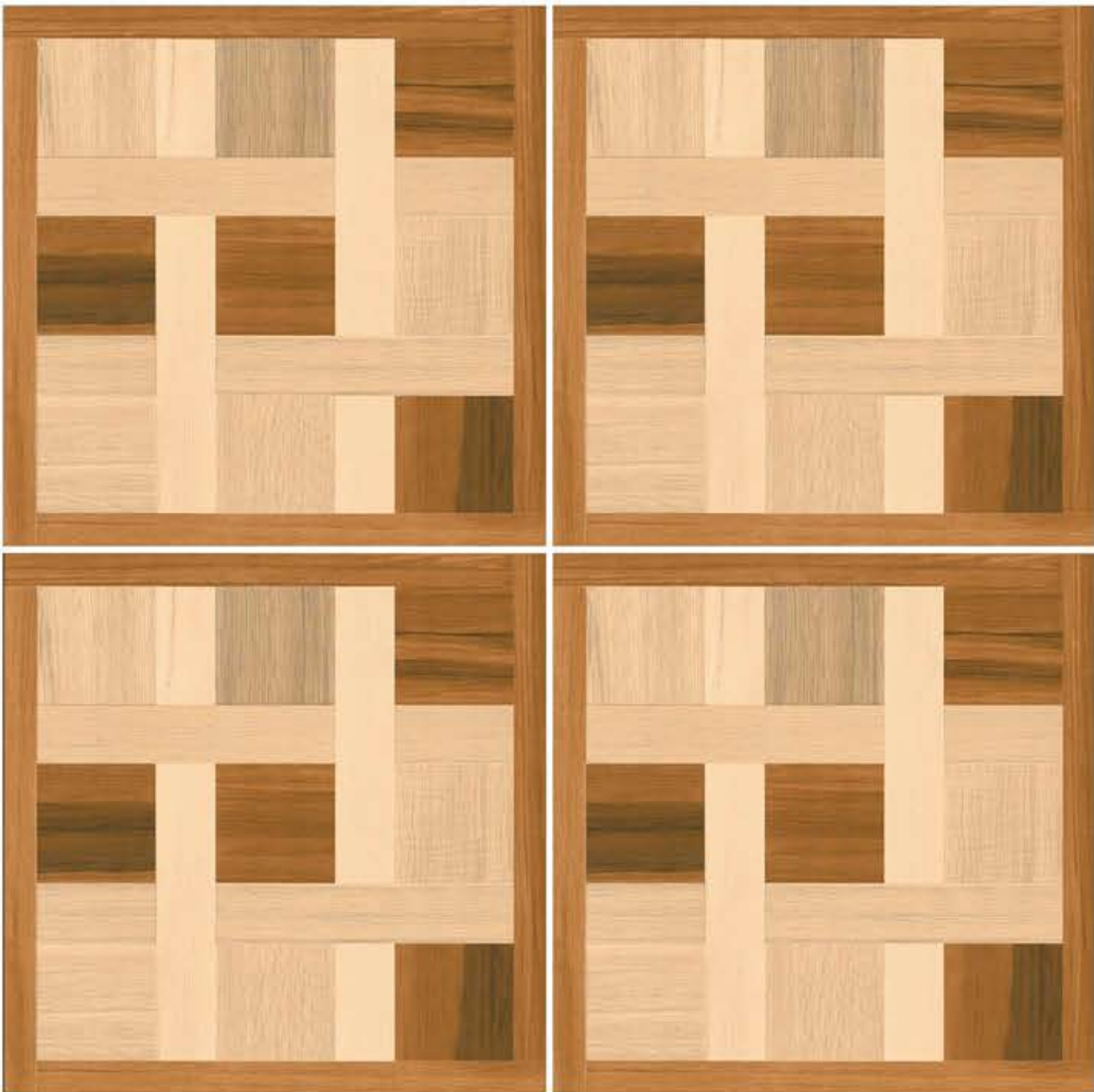
12049



12050



12051





**PUNCH
SERIES**

APPLICATIONS



WHITE BODY

**600MMx600MM
PORCELAIN TILES**



12052



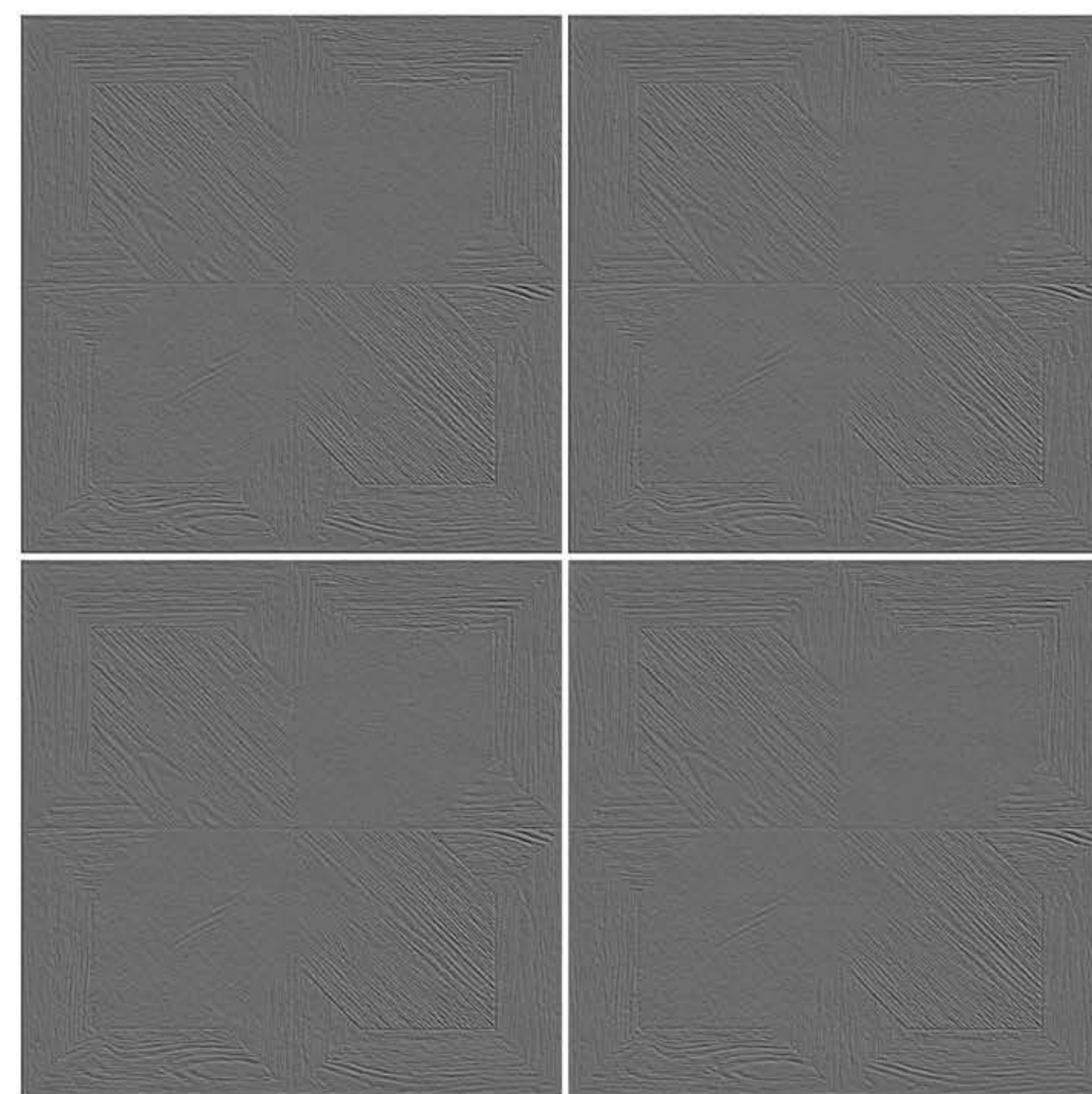
12053



12054



12055





**PUNCH
SERIES**

APPLICATIONS



WHITE BODY

**600MMx600MM
PORCELAIN TILES**



12056



12057



12058



12059



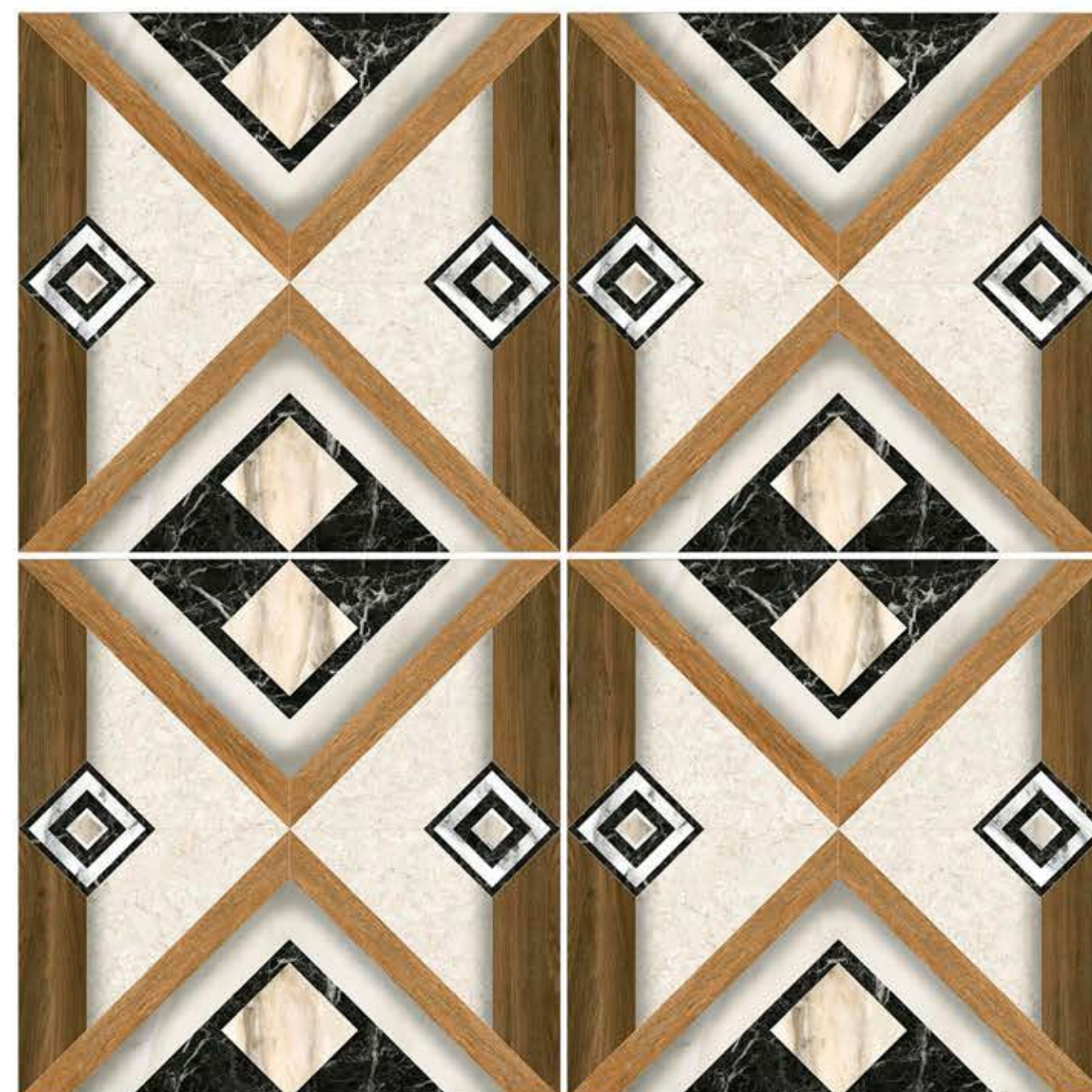
12060



12061



12062





TECHNICAL SPECIFICATION

Particulars	Standard as per ISO 13006/EN 176	OUR VALUE	METHOD OF TESTING
Deviation in length	± 0.50%	± 0.3%	EN 98
Deviation in Thickness	± 5%	± 3%	EN 98
Straightness Of Sides	± 0.5%	± 0.3%	EN 98
Rectangularity	± 0.6%	± 0.3%	EN 98
Surface Flatness	± 0.5%	± 0.3%	EN 98
Water Absorption	< 3	3 < 4	ISO 10945.3 EN 98
Mohs Hardness	> 5	> 5	EN 101
Flexural Strength	> 35 N/Sq.mm	> 39 N/Sq.mm	—
Abrasion Resistance	As specified by Manufacturer	PE 3	ISO 10545.6 EN 102
Frost Resistance	Frost Proof	Frost Proof	ISO 10534 - 11
Chemical Resistance	No Damage	No Damage	ISO 10534 - 18
Thermal Shock Resistance	No Damage	No Damage	ISO 10545 - 9
Colour Resistance	No Damage	No Damage	—
Stain Resistance	Resistance	Stain Proof	ISO 10545 - 14
Moisture Expansion	NIII	NIII	ISO 10545 - 10
Crazing Resistance	Min 2 Cycle	Min 4 Cycle	—

Note : Colour Shown are as accurate as the limitations of the printing process will allow. Prospective Customer Are advised to inspect a sample of the tiles before ordering every effort has been made to ensure the Accuracy of the information given. However, the Company reserves the right to change the specifications without prior notice. Sometimes variations in shade or size being inherent to ceramic industry may occur. Before fixing, we advice you to follow the fixing Instruction on the cartons of the tiles as on responsibility can be accepted by the company once the tiles have been fixed.

PACKING DETAIL

Size	Thickness	No. of Tiles	Area Approx.	Weight Approx.
600 X 600 MM	9 MM	4 Pcs.	1.44 Sq. Mtr.	25 Kg.

UTILITY OF FLOOR TILES



GLOBAL PRESENCE



ABROAD VITRIFIED PVT. LTD.

📍 Opp. Bela Village, Khokhra Hanuman Road, At. Bela, Pipli-Jetpar Road,
Tal. & Dist. Morbi-363642 (Guj.) INDIA.

📞 +91 99090 00771 / 99090 00772 / 99090 00776

✉️ abroadvitrified@gmail.com 🌐 www.abroadvitrified.com

Follow us

